

Deutsche Telekom's Home Management Platform. The Smart Home Ecosystem.

Andreas Kraft

Telekom Innovation Laboratories

January 2012

Life is for sharing.



Home Management Platform Overview

The most important use cases.

- Energy Management
- Security/Home Monitoring
- Convenience
- Media Usage
- Ambient Assisted Living



What does the customer want?

An improvement in **quality of life**,

- **Deceleration**
- Easy use of **media content**
- To **save money**
- **Comfort/convenience**
- **Social prestige**
- **Fun**
- To **feel secure** and
- To do something **good** for the **environment**...

...on **existing devices** with little effort...

...the **approval** of his **partner**

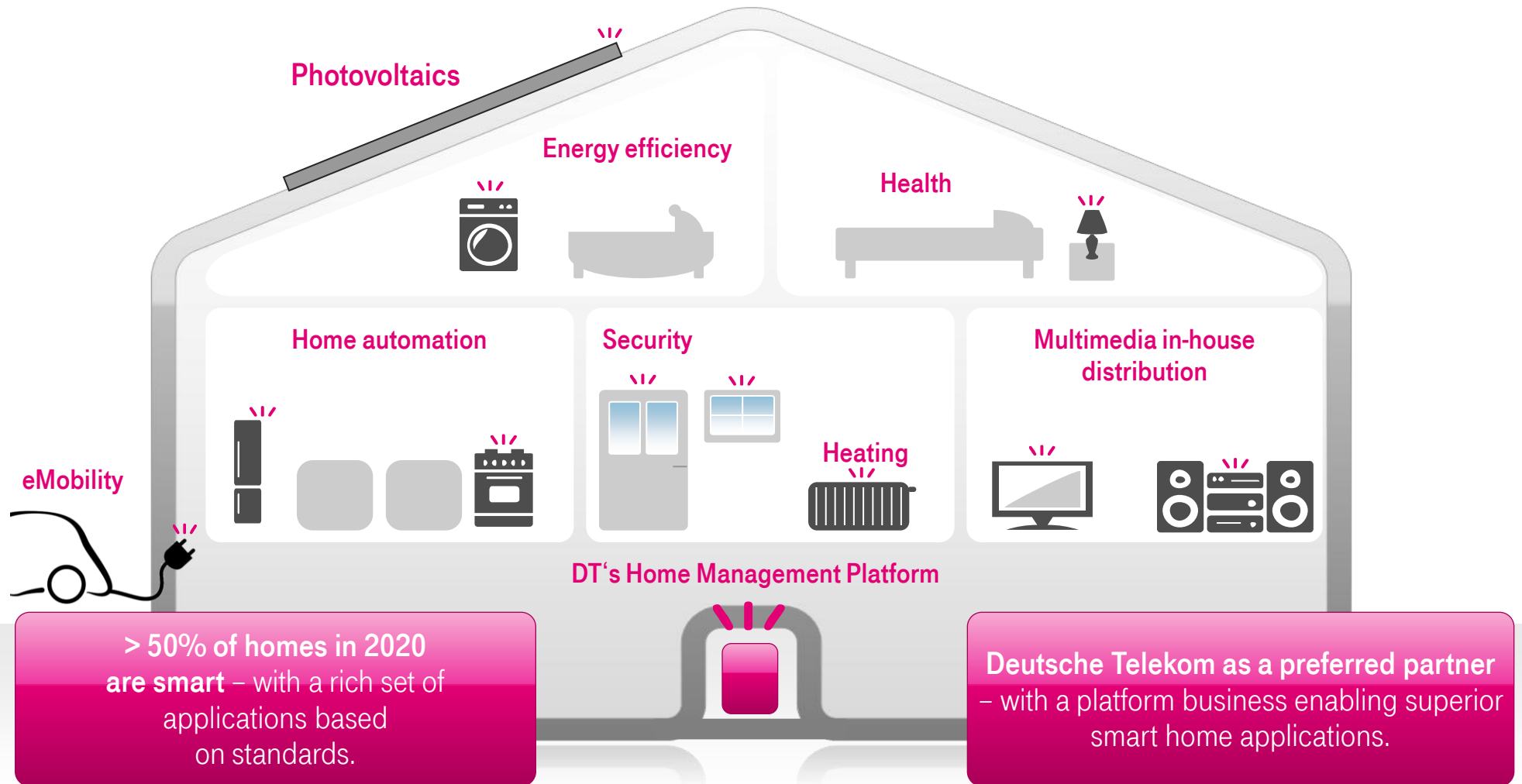


Why now?

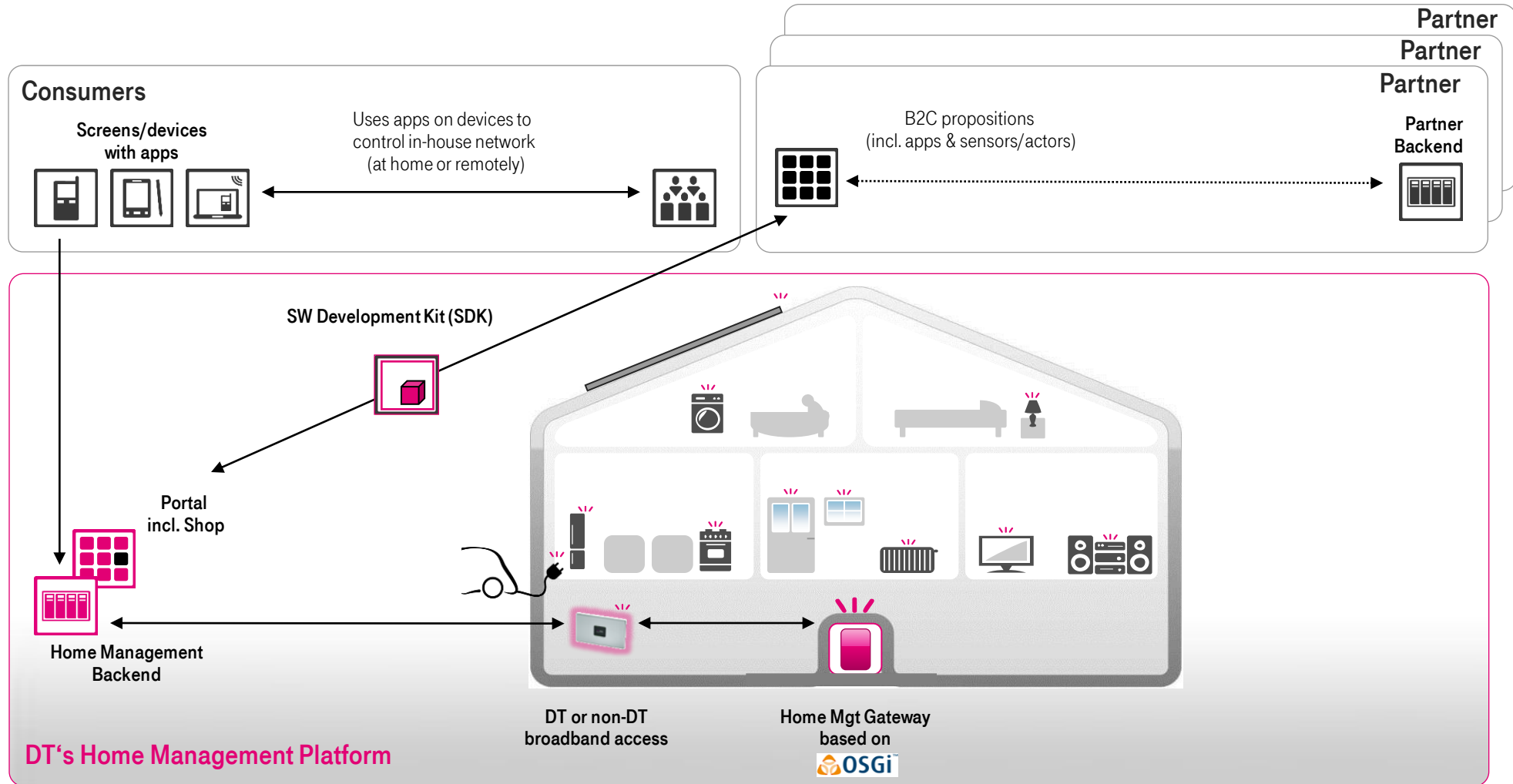
- ... high **broadband** penetration
- ... increasing usage of **smartphones/pads**
- ... **prices** for components have gone down
- ... increased awareness through **energy debate** (especially in Germany)
- ... **pull effects** slowly building through trials and first mass-market offers
- ... increasing willingness of partners to join a **common platform**



Our Vision of the Future.

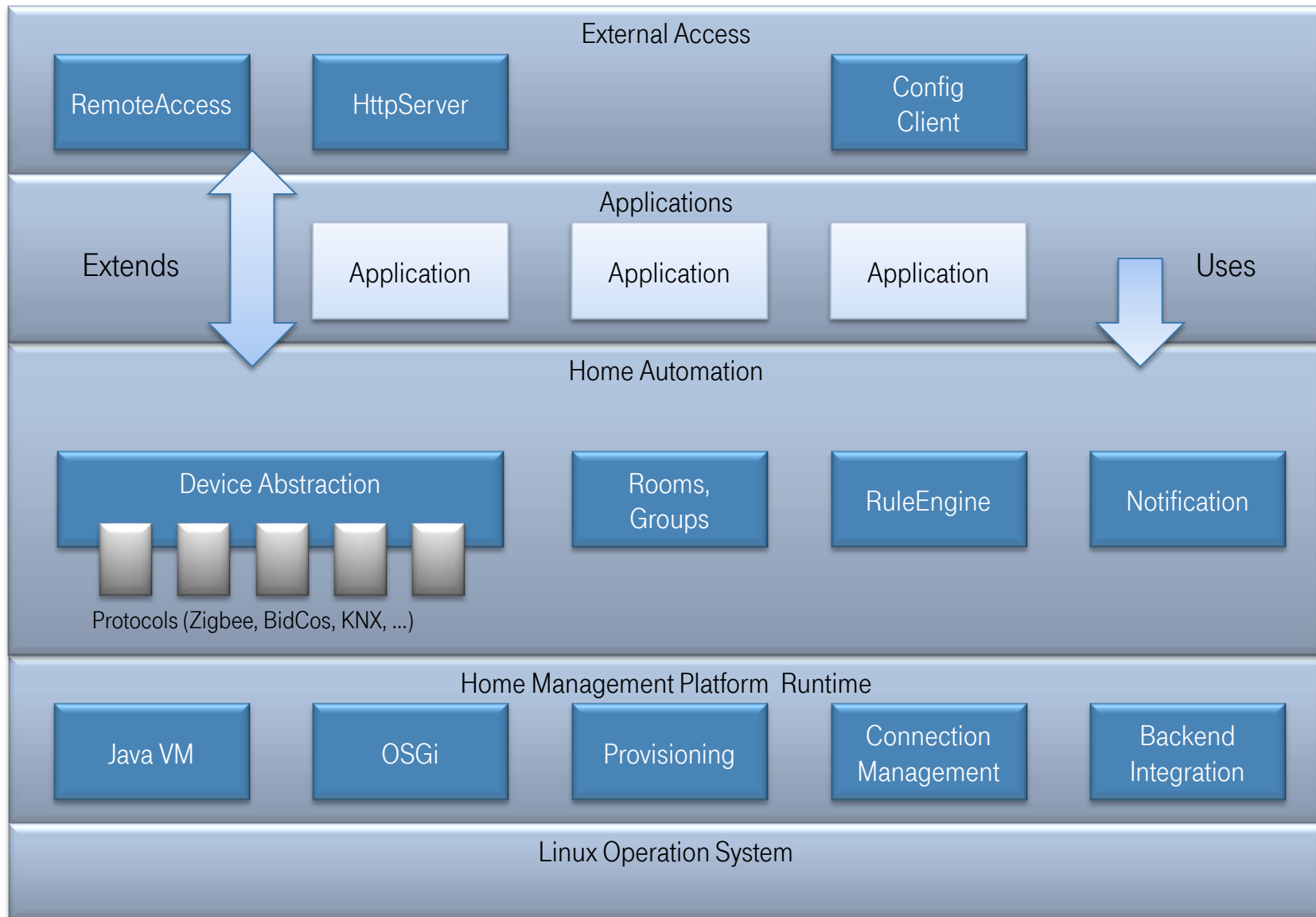


The Architecture.

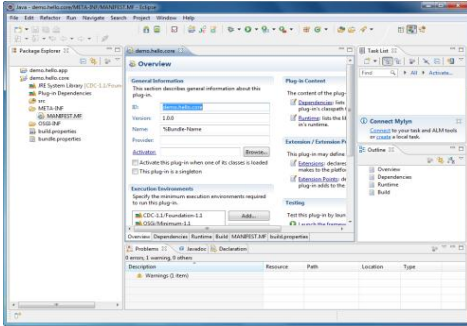


Home Management Platform SDK

Home Management Platform Runtime – APIs supported.

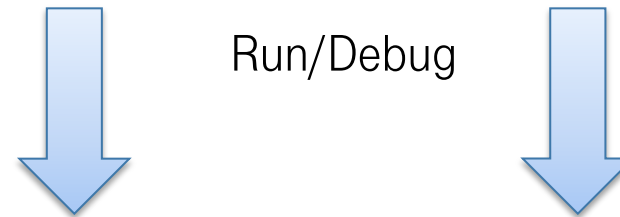
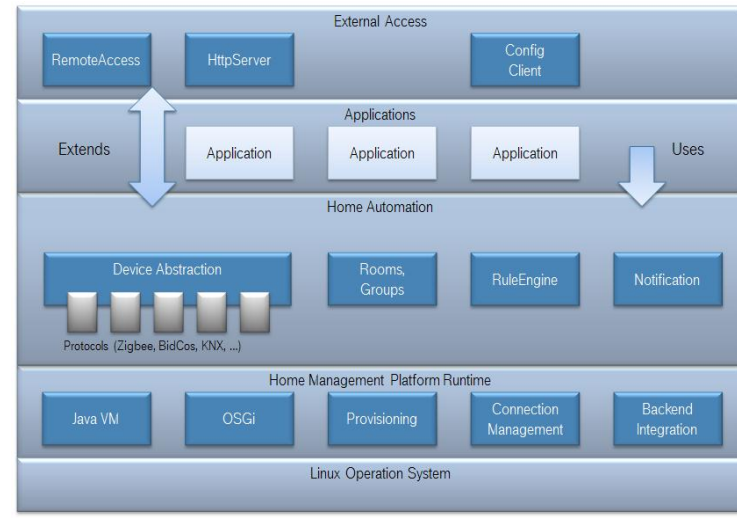


Home Management Platform Development Toolkit.

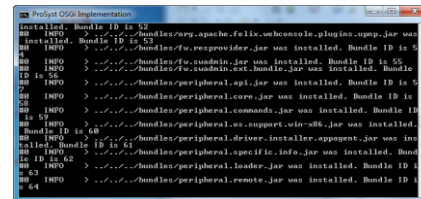


Eclipse based Development Toolkit

- Debugging
- Profiling
- Testing support
- Build support
- Win/Linux/Mac



Run/Debug



OSGi Emulator

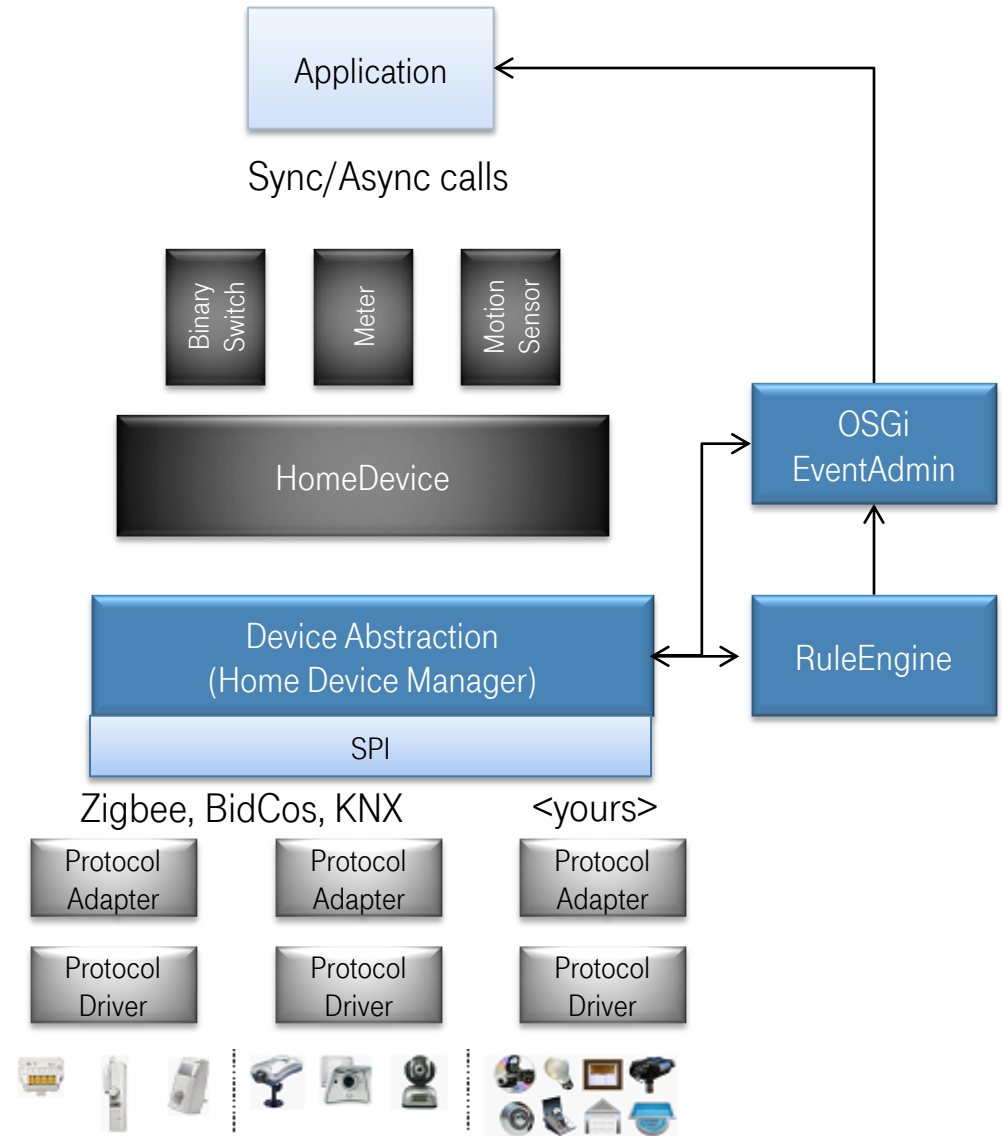


Home Management Box



Home Management Platform Runtime – Device Abstraction.

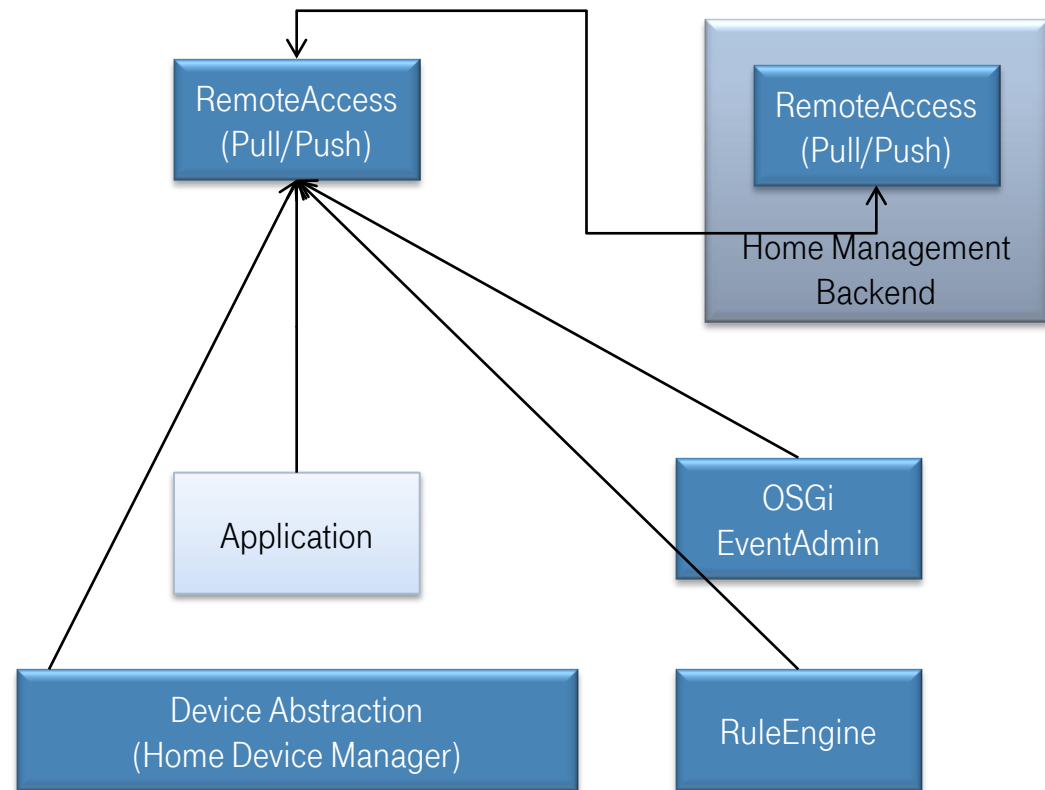
- Physical Device represented by 1..n abstracted behaviors
- Synchronous / asynchronous programming model
- Asynchronous notification via OSGi Event Admin
- Rule Engine deeply integrated with device abstraction
- Builtin Protocol Adapters for approved / reliable inhouse protocols (wireless, wired)
- Extensible Device Abstraction (SPI)



Home Management Runtime – Remote Access API.

- Home Management Services exposed via RemoteAccess API
 - DeviceAbstraction, RuleEngine, EventAdmin
 - permission for external applications required
 - JSON-RPC based, REST planned
- Common API for local access AND access via backend
 - e.g. for SmartPhone applications connecting locally and via Internet
 - Reliabel communication between backend / Home Management Box
- Push Notification supported
 - locally, planned for backend too (WebSockets)
- Exposure of application services supported
 - locally, via Internet

Common Remote Access API
for Local / Internet based access
(JSON-RPC based)



Conclusion

Roadmap.



What convinced the first partners?

- A **viable business model** for all participants in the value chain
- An **open, standardized, flexible** and **cost-effective** technical platform
- The **possibility to differentiate** through own customer solutions
- An alliance of **strong partners** which jointly develops and shapes the market

e-on

— **EnBW**

Miele

eQ3
Electronic Equipment

WINKEL
SOLARSYSTEME

SAMSUNG



Interoperability Benefits for the End Customer.



- Great choice of attractive solutions
- Strong brands and innovative start-ups
- Sensors and actors - everything compatible
- Excellent price/performance ratio
- Future-proof



Contacts.



Holger Knöpke

Leiter Connected Home

Hausanschrift Landgrabenweg 151, 53227 Bonn

Fon +49 228 936 17400

E-Mail: holger.knoepke@telekom.de



Carsten Otto

Leiter Home Management
Plattform & Partner Management

Hausanschrift Landgrabenweg 151, 53227 Bonn

Fon +49 228 936 17410

E-Mail: carsten-otto@telekom.de

Ansprechpartner für Energieversorger und Wohnungswirtschaft:



Sibylle Westermann

Leiterin Vertriebssteuerung &
Business Development

Hausanschrift Friedrich-Ebert-Allee 71-77, 53113 Bonn

Fon +49 228 181-61110

E-Mail: sibylle.westermann@t-systems.com

Ansprechpartner für alle anderen Partner:



Hans-Jürgen Prell

Home Management Plattform
Partner-Management

Hausanschrift Godesberger Allee 83-91, 53175 Bonn

Fon +49 228 181-58400

E-Mail: hans-juergen.prell@telekom.de



Thank you for your attention.



Andreas Kraft
Telekom Innovation Laboratories

Hausanschrift Winterfeldtstr. 21, 10787 Berlin
Fon +4930835358185
E-Mail: a.kraft@telekom.de

